

Contents

- A5 Editorial Board
A7 Highlights of this issue

Editorials

- 91 **Old age psychiatry and geriatric medicine: shared challenges, shared solutions?**
J. Fisher and A. Teodorczuk
- 94 **Promising evidence for nutrition interventions in people with serious mental illness**
N. Meader

Review articles

- 96 **Childhood maltreatment and characteristics of adult depression: meta-analysis**
J. Nelson, A. Klumpparendt, P. Doebler and T. Ehring
- 105 **Cortisol as a predictor of psychological therapy response in depressive disorders: systematic review and meta-analysis**
S. Fischer, R. Strawbridge, A. Herane Vives and A. J. Cleare
- 110 **Solving a weighty problem: systematic review and meta-analysis of nutrition interventions in severe mental illness**
S. B. Teasdale, P. B. Ward, S. Rosenbaum, K. Samaras and B. Stubbs

- 118 **James Foulis Duncan – psychiatry in history**
Brendan D. Kelly

Papers

- 119 **Undertreatment of people with major depressive disorder in 21 countries**
G. Thornicroft, S. Chatterji, S. Evans-Lacko, M. Gruber, N. Sampson, S. Aguilar-Gaxiola, A. Al-Hamzawi, J. Alonso, L. Andrade, G. Borges, R. Bruffaerts, B. Bunting, J. M. Caldas de Almeida, S. Florescu, G. de Girolamo, O. Gureje, J. M. Haro, Y. He, H. Hinkov, E. Karam, N. Kawakami, S. Lee, F. Navarro-Mateu, M. Piazza, J. Posada-Villa, Y. Torres de Galvis and R. C. Kessler
- 125 **Prevalence of mental disorders in elderly people: the European MentDis_ICF65+ study**
S. Andreas, H. Schulz, J. Volkert, M. Dehoust, S. Sehner, A. Suling, B. Ausin, A. Canuto, M. Crawford, C. Da Ronch, L. Grassi, Y. Hershkovitz, M. Muñoz, A. Quirk, O. Rotenstein, A. B. Santos-Olmo, A. Shalev, J. Strehle, K. Weber, K. Wegscheider, H.-U. Wittchen and M. Härter

- 131 **In the Spirit of Rivers – poems by doctors**
Jo McFarlane

- 132 **Depression screening with patient-targeted feedback in cardiology: DEPSCREEN-INFO randomised clinical trial**
B. Löwe, S. Blankenberg, K. Wegscheider, H.-H. König, D. Walter, A. M. Murray, B. Gierk and S. Kohlmann

- 140 **Acceptance and commitment therapy for psychosis: randomised controlled trial**
F. Shawyer, J. Farhall, N. Thomas, S. C. Hayes, R. Gallop, D. Copolov and D. J. Castle

- 149 **Democratic therapeutic community treatment for personality disorder: randomised controlled trial**
S. Pearce, L. Scott, G. Attwood, K. Saunders, M. Dean, R. De Ridder, D. Galea, H. Konstantinidou and M. Crawford

- 156 **Article 3 – poems by doctors**
Frederick Hopkinson

- 157 **Costs of the police service and mental healthcare pathways experienced by individuals with enduring mental health needs**
M. Heslin, L. Callaghan, B. Barrett, S. Lea, S. Eick, J. Morgan, M. Bolt, G. Thornicroft, D. Rose, A. Healey and A. Patel

Short report

- 165 **Clinically useful screen for borderline personality disorder in psychiatric out-patients**
M. Zimmermann, M. D. Multach, K. Dalrymple and I. Chelminski

Columns

- 167 Correspondence
169 Book reviews
173 Contents of the *American Journal of Psychiatry*
173 Contents of *BJPsych Advances*
174 Kaleidoscope
176 From the Editor's desk

Cover picture

Shall I This Time Hold You? (2016)
by Sophie Clements (b. 1978).

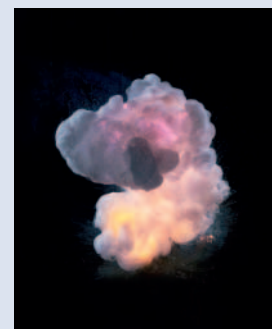
Hospital Rooms has worked in collaboration with South West London and St George's Mental Health NHS Trust to commission world class artists to refurbish the Phoenix Unit, a secure psychiatric rehabilitation residential ward for patients who have a diagnosis of schizophrenia at Springfield University Hospital in Tooting. Hospital Rooms promotes the improved health and wellbeing of mental health service users by enhancing environments in mental health hospitals through the provision of high-quality and compliant design, art and creative activity.

Artist Sophie Clements has installed a series of photographs called *Shall I This Time Hold You?* in the Games Room at the Phoenix Unit. This dynamic collection of images documents the split seconds after an explosion using 'bullet time' photography (filming simultaneously from many camera angles). Much of Sophie's work involves documenting a point of change, and she is interested in how we might attempt to delay or capture these moments despite the impossibility of doing so. These works are a celebration of the present 'moment' and an invitation to look back at past moments of beauty in our lives.

Courtesy of Sophie Clements and Hospital Rooms, a charity registered in England and Wales (no. 1168101)

www.hospital-rooms.com
info@hospital-rooms.com

We are always looking for interesting and visually appealing images for the cover of the *Journal* and would welcome suggestions or pictures, which should be sent to Dr Allan Beveridge, British Journal of Psychiatry, 21 Prescot Street, London E1 8BB, UK or bjp@rcpsych.ac.uk.



BJPpsych

The British Journal of Psychiatry

210 (2)

BJP 2017, 210:A7-176.

Access the most recent version at DOI:

References

This article cites 0 articles, 0 of which you can access for free at:
<http://bjp.rcpsych.org/content/210/2#BIBL>

**Reprints/
permissions**

To obtain reprints or permission to reproduce material from this paper, please write to permissions@rcpsych.ac.uk

**You can respond
to this article at**

</letters/submit/bjprcpsych;210/2>

**Downloaded
from**

<http://bjp.rcpsych.org/> on May 27, 2017
Published by [The Royal College of Psychiatrists](#)
