

## Contents

- A5 Editorial Board  
A7 Highlights of this issue

## Editorials

- 61 **Doctor in court: what do lawyers really need from doctors, and what can doctors learn from lawyers?**  
H. Series and J. Herring
- 63 **Sexual orientation and suicidal behaviour in young people**  
N. Meader and M. K. Y. Chan

## Analysis

- 65 **Navigating the challenges of digital health innovation: considerations and solutions in developing online and smartphone-application-based interventions for mental health disorders**  
C. Hill, J. L. Martin, S. Thomson, N. Scott-Ram, H. Penfold and C. Creswell

## Review articles

- 70 **Interaction between the *FTO* gene, body mass index and depression: meta-analysis of 13 701 individuals**  
M. Rivera, A. E. Locke, T. Corre, D. Czamara, C. Wolf, A. Ching-Lopez, Y. Milaneschi, S. Kloiber, S. Cohen-Woods, J. Rucker, K. J. Aitchison, S. Bergmann, D. I. Boomsma, N. Craddock, M. Gill, F. Holsboer, J.-J. Hottenga, A. Korszun, Z. Kutalik, S. Lucae, W. Maier, O. Mors, B. Müller-Myhsok, M. J. Owen, B. W. J. H. Penninx, M. Preisig, J. Rice, M. Rietschel, F. Tozzi, R. Uher, P. Vollenweider, G. Waeber, G. Willemsen, I. W. Craig, A. E. Farmer, C. M. Lewis, G. Breen and P. McGuffin
- 77 **Sexual orientation and suicidal behaviour in adolescents and young adults: systematic review and meta-analysis**  
A. Miranda-Mendizábal, P. Castellví, O. Parés-Badell, J. Almenara, I. Alonso, M. J. Blasco, A. Cebrià, A. Gabilondo, M. Gili, C. Lagares, J. A. Piqueras, M. Roca, J. Rodríguez-Marín, T. Rodríguez-Jiménez, V. Soto-Sanz, G. Vilagut and J. Alonso

- 87 ***The Psychopathology of Everyday Life, Sigmund Freud – reflection***  
Jeremy Holmes

## Papers

- 88 **Ethnicity and long-term course and outcome of psychotic disorders in a UK sample: the *ÆSOP-10* study**  
C. Morgan, P. Fearon, J. Lappin, M. Heslin, K. Donoghue, B. Lomas, U. Reininghaus, A. Onyejiaka, T. Croudace, P. B. Jones, R. M. Murray, G. A. Doody and P. Dazzan
- 95 **Computerised cognitive-behavioural therapy for adults with intellectual disability: randomised controlled trial**  
P. Cooney, C. Jackman, D. Coyle and G. O'Reilly
- 102 **Noise in her Mind – poems by doctors**  
Kai Michael Neumann
- 103 **Staff experiences and perceptions of working with in-patients who are suicidal: qualitative analysis**  
Y. Awenat, S. Peters, E. Shaw-Nunez, P. Gooding, D. Pratt and G. Haddock

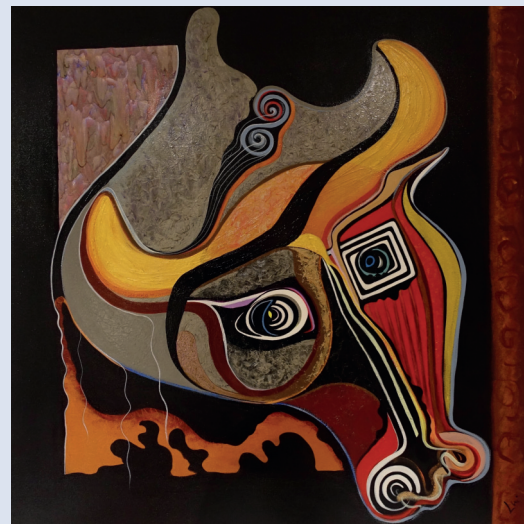
- 109 **Beneficial and harmful effects of educative suicide prevention websites: randomised controlled trial exploring Papageno v. Werther effects**  
B. Till, U. S. Tran, M. Voracek and T. Niederkrotenthaler

## Columns

- 116 Correspondence  
120 Correction  
121 Book reviews  
123 Contents of the *American Journal of Psychiatry*  
123 Contents of *BJPsych Advances*  
124 Kaleidoscope  
126 From the Editor's desk

## Cover picture

*The Minotaur* (2016), by Dr Luiselotte Ziackova (b. 1968).



Dr Luiselotte Ziackova has worked in psychiatry for over 20 years and has incorporated mental health themes into her art, which also draws upon Greek mythology for inspiration (<http://www.e-modernegallerie.com/luiselotteziackova/>). Dr Ziackova works in a Psychiatric Intensive Care Unit (PICU).

The picture represents bipolar affective disorder, with the left side of the Minotaur's face exhibiting the energy and irritability associated with mania, and the right side showing a depressive phase with sadness and despair. The left eye is framed by a representation of the labyrinth and the thread given to Theseus by Ariadne is shown next to the right horn.

Dr Ziackova chose the theme because she wanted to represent the challenges that acutely mentally ill patients present, particularly when very aggressive or seized with overwhelming compulsions to self-harm. They find themselves isolated, despairing and very vulnerable – trapped within their own labyrinth – the artist choosing the ball of thread to represent the therapeutic path back to health.

Finally, the picture also incorporates a guitar, a common reference in Dr Ziackova's pictures, representing the effects of a tranquil milieu on the human psyche.

The picture was painted for Dr Mark Tarn – consultant psychiatrist and chair of the St Andrew's Healthcare PICU Clinical Effectiveness Group – for his 50th birthday. Image kindly supplied by Dr Tarn.

We are always looking for interesting and visually appealing images for the cover of the *Journal* and would welcome suggestions or pictures, which should be sent to Dr Allan Beveridge, British Journal of Psychiatry, 21 Prescott Street, London E1 8BB, UK or [bjp@rcpsych.ac.uk](mailto:bjp@rcpsych.ac.uk).

# BJP The British Journal of Psychiatry Psych

**211 (2)**

*BJP* 2017, 211:A7-126.

Access the most recent version at DOI:

---

**References**

This article cites 0 articles, 0 of which you can access for free at:  
<http://bjp.rcpsych.org/content/211/2#BIBL>

**Reprints/  
permissions**

To obtain reprints or permission to reproduce material from this paper, please write to [permissions@rcpsych.ac.uk](mailto:permissions@rcpsych.ac.uk)

**You can respond  
to this article at**

</letters/submit/bjprcpsych;211/2>

**Downloaded  
from**

<http://bjp.rcpsych.org/> on August 18, 2017  
Published by [The Royal College of Psychiatrists](#)

---