

Contents

- A21 Editorial Board
A23 Highlights of this issue

Editorials

- 331 Outcome and recovery in first-episode psychosis
P. Power

- 333 Idles: 'Stendhal Syndrome' – psychiatry in music
Gary Woods

- 334 Network meta-analysis: drawing conclusions regarding trials of psychosocial interventions for bipolar disorder
D. J. Miklowitz, A. Cipriani and G. M. Goodwin

- 337 Prison mental health in-reach teams in England: the care programme approach and sexual abuse/violence
C. G. D. Brooker and A. Forrester

Review articles

- 339 Cholesterol and triglyceride levels in first-episode psychosis: systematic review and meta-analysis
T. Pillinger, K. Beck, B. Stubbs and O. D. Howes

- 349 T2 *Trainspotting*: addiction in a digital age – psychiatry in the movies
Peter Byrne

- 350 Remission and recovery from first-episode psychosis in adults: systematic review and meta-analysis of long-term outcome studies
J. Lally, O. Ajnakina, B. Stubbs, M. Cullinane, K. C. Murphy, F. Gaughran and R. M. Murray

Papers

- 359 High intelligence and the risk of ADHD and other psychopathology
N. Rommelse, K. Antshel, S. Smeets, C. Greven, L. Hoogveen, S. V. Faraone and C. A. Hartman
- 365 Sensitive periods for the effect of childhood interpersonal violence on psychiatric disorder onset among adolescents
E. C. Dunn, Y. Wang, J. Tse, K. A. McLaughlin, G. Fitzmaurice, S. E. Gilman and E. S. Susser
- 373 Trauma and psychotic experiences: transnational data from the World Mental Health Survey
J. J. McGrath, S. Saha, C. C. W. Lim, S. Aguilar-Gaxiola, J. Alonso, L. H. Andrade, E. J. Bromet, R. Bruffaerts, J. M. Caldas de Almeida, G. Cardoso, G. de Girolamo, J. Fayyad, S. Florescu, O. Gureje, J. M. Haro, N. Kawakami, K. C. Koenen, V. Kovess-Masfety, S. Lee, J.-P. Lepine, K. A. McLaughlin, M. E. Medina-Mora, F. Navarro-Mateu, A. Ojagbemi, J. Posada-Villa, N. Sampson, K. M. Scott, H. Tachimori, M. ten Have, K. S. Kendler, R. C. Kessler, on behalf of the WHO World Mental Health Survey Collaborators

- 380 Kathleen Jones' *Asylums and After* – reflection
Georg Ikkos

- 381 Associations between residual depressive symptoms, cognition, and functioning in patients with euthymic bipolar disorder: results from the FACE-BD cohort
P. Roux, A. Raust, A.-S. Cannavo, V. Aubin, B. Aouizerate, J.-M. Azorin, F. Bellivier, R. Belzeaux, T. Bougerol, I. Cussac, P. Courtet, B. Etain, S. Gard, S. Job, J.-P. Kahn, M. Leboyer, E. Olié, the FondaMental Advanced Centers of Expertise in Bipolar Disorders (FACE-BD) Collaborators, C. Henry and C. Passerieux

- 388 Impact of co-located welfare advice in healthcare settings: prospective quasi-experimental controlled study
C. Woodhead, M. Khondoker, R. Lomas and R. Raine

- 395 Punk rock made me a psycho-therapist – psychiatry in music
David Meagher

Columns

- 396 Correspondence
401 Corrections
402 Book reviews
403 Contents of the *American Journal of Psychiatry*
403 Contents of *BJPsych Advances*
404 Kaleidoscope
406 From the Editor's desk

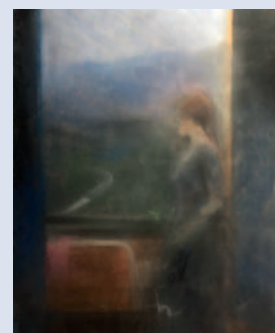
Cover picture

The House of Bernada Alba (1989)
by Sue Dunkley (b.1942)

Hospital Rooms is an arts and mental health charity that commissions museum-quality artists to transform mental health units with inventive, compelling and compliant artworks and environments. They are working in collaboration with Camden and Islington NHS Foundation Trust to refurbish their Garnet Ward, which offers care for older people (65+) with dementia and other challenges at Highgate Mental Health Centre.

As part of this project, the family of celebrated artist Sue Dunkley have donated this piece, *The House of Bernada Alba*, to Hospital Rooms for display in the Garnet Ward. Sue is in the later stages of dementia and has recently moved to a local care home. She had a solo exhibition at Alison Jacques Gallery in July 2017, which presented a series of significant drawings and paintings from the 1960s to the 1980s.

www.hospital-rooms.com



We are always looking for interesting and visually appealing images for the cover of the *Journal* and would welcome suggestions or pictures, which should be sent to Dr Allan Beveridge, British Journal of Psychiatry, 21 Prescot Street, London E1 8BB, UK or bjp@rcpsych.ac.uk.

BJPpsych

The British Journal of Psychiatry

211 (6)

BJP 2017, 211:A23-406.

Access the most recent version at DOI:

References

This article cites 0 articles, 0 of which you can access for free at:
<http://bjp.rcpsych.org/content/211/6#BIBL>

**Reprints/
permissions**

To obtain reprints or permission to reproduce material from this paper, please write to permissions@rcpsych.ac.uk

**You can respond
to this article at**

</letters/submit/bjprcpsych;211/6>

**Downloaded
from**

<http://bjp.rcpsych.org/> on December 13, 2017
Published by [The Royal College of Psychiatrists](#)
