

# Mortality gap for people with bipolar disorder and schizophrenia: UK-based cohort study 2000–2014

Joseph F. Hayes, Louise Marston, Kate Walters, Michael B. King and David P. J. Osborn

## Background

Bipolar disorder and schizophrenia are associated with increased mortality relative to the general population. There is an international emphasis on decreasing this excess mortality.

## Aims

To determine whether the mortality gap between individuals with bipolar disorder and schizophrenia and the general population has decreased.

## Method

A nationally representative cohort study using primary care electronic health records from 2000 to 2014, comparing all patients diagnosed with bipolar disorder or schizophrenia and the general population. The primary outcome was all-cause mortality.

## Results

Individuals with bipolar disorder and schizophrenia had

elevated mortality (adjusted hazard ratio (HR)=1.79, 95% CI 1.67–1.88 and 2.08, 95% CI 1.98–2.19 respectively). Adjusted HRs for bipolar disorder increased by 0.14/year (95% CI 0.10–0.19) from 2006 to 2014. The adjusted HRs for schizophrenia increased gradually from 2004 to 2010 (0.11/year, 95% CI 0.04–0.17) and rapidly after 2010 (0.34/year, 95% CI 0.18–0.49).

## Conclusions

The mortality gap between individuals with bipolar disorder and schizophrenia, and the general population is widening.

## Declaration of interest

None.

## Copyright and usage

© The Royal College of Psychiatrists 2017. This is an open access article distributed under the terms of the Creative Commons Attribution (CC BY) licence.

Death rates are increased in people with severe mental illness (SMI) relative to the general population, and this is reflected in the 10- to 20-year reduced life expectancy observed.<sup>1–3</sup> This has been found in a number of longitudinal studies.<sup>4–7</sup> However, it has been reported that the mortality gap has narrowed or plateaued since the mid-1990s in some countries.<sup>8,9</sup> Since the turn of the millennium, a number of strategies aimed at reducing the mortality gap between people with SMI and the general population have been implemented in the UK.<sup>10–17</sup> Similar strategies have been employed in other countries, including the USA,<sup>18,19</sup> Canada,<sup>20,21</sup> Australia<sup>22–24</sup> and throughout Europe.<sup>25,26</sup> Few studies cover this period. It is therefore timely to review all-cause and cause-specific mortality rates in individuals with bipolar disorder and schizophrenia relative to the general population. We used cardiovascular (CVD) mortality and suicide as exemplars of natural and unnatural causes of death that have been targets of mental health policy. Evidence suggests CVD is the leading cause of death in individuals with SMI.<sup>2,27,28</sup> However, large representative longitudinal studies remain limited in number.<sup>29</sup> In the UK a number of initiatives have been targeted at reducing CVD morbidity; to encourage earlier diagnosis,<sup>10</sup> reduce risk factors<sup>30,31</sup> and ensure effective treatment implementation.<sup>32</sup> Suicide is the cause of death that is most elevated in individuals with bipolar disorder and schizophrenia compared with the general population.<sup>33,34</sup> Up-to-date estimates of suicide rates are important markers of the success of psychiatric care.<sup>17</sup> Self-harm is the major risk factor for suicide, with a large number of those dying by suicide having a history of self-harm.<sup>35</sup> Self-harm is also a marker of quality of life and emotional distress in individuals with SMI.<sup>36</sup> This study compares all-cause mortality, CVD death and CVD diagnosis, suicide and self-harm rates in people with bipolar disorder, and schizophrenia and a general population comparator group from 2000 to 2014.

## Method

### Study design and setting

We completed a cohort study in pseudonymised primary care electronic health records (EHR) provided by The Health Improvement Network (THIN) from 1 January 2000 until 31 December 2014. The database contains longitudinal records of over 11 million people and currently covers almost 6% of the UK population. Almost 99% of the UK population are registered with a primary care practice, and the majority will be so from birth to death.<sup>37</sup> Individuals included in THIN are representative of the UK general population in terms of age, gender, medical conditions and death rates, and the behaviour of physicians entering data is representative in terms of consultation and prescribing statistics.<sup>38</sup> Primary care practices were only included in the study after the date at which they met acceptable mortality and computer usage reporting.<sup>39,40</sup> The reliability of THIN for research purposes has been validated against experimental and other observational evidence.<sup>41,42</sup> THIN records are based on Read codes, a hierarchical coding system that includes diagnoses (which map onto ICD-10 codes), medication prescriptions, symptoms, examination findings, referrals, test results and hospital attendance information.<sup>43</sup> The study was approved by the Cegedim Strategic Data Medical Research UK Scientific Review Committee in March 2015. The scheme for THIN to provide anonymised patient data to researchers was approved in 2003 by the National Health Service South-East Multicentre Research Ethics Committee.

### Participants

All individuals aged 16 or over, ever receiving a diagnosis of bipolar disorder or schizophrenia were included. If individuals

had multiple diagnoses, they were classified by the diagnosis most recently assigned. Patients with schizoaffective disorders and unipolar depression were excluded. The validity of bipolar disorder and schizophrenia diagnoses in primary care records has been established and the incidence of bipolar disorder and schizophrenia in THIN is similar to other European cohorts.<sup>44,45</sup> Individuals with bipolar disorder and schizophrenia were frequency matched with up to six individuals without these diagnoses to create a comparator group. The comparator group was matched on age (in 5-year age bands) and gender, from within the same primary care practice.

## Outcomes

CVD was defined as any entry of myocardial infarction, ischemic heart disease or cerebrovascular event in the EHR. CVD diagnoses have previously been validated in THIN with positive predictive values (PPVs) greater than 90%.<sup>46,47</sup> In line with other studies, CVD mortality was defined as a death code with a CVD cause, or a CVD code, followed by a death code in the following 60 days and a final date of any activity in the EHR within 6 months.<sup>48</sup>

The definition for self-harm events included Read codes for intentional poisoning, intentional self-injurious behaviour and self-harm acts of uncertain intent. This unitary definition of self-harm, where there is no distinction made between non-suicidal self-harm and self-harm with suicidal intent is consistent with UK research norms.<sup>49</sup> The PPV of this outcome in THIN has been shown to be 97%.<sup>50</sup> Suicide was defined as a death code identified as suicide or a self-harm code followed by a death code in the following 30 days and a final date of any activity in the EHR within 6 months, in line with previous research.<sup>50,51</sup>

## Statistical analyses

Rates of all-cause, cause-specific mortality (CVD deaths, suicide) and morbidity (CVD, self-harm) were calculated. Annual rates were calculated for all-cause mortality. In order to assess trends in rates over time, a segmented regression analysis using joinpoint models was performed.<sup>52,53</sup> To complete this analysis the Surveillance Research Program of the United States National Cancer Institute Joinpoint software was used (Version 4.3.1.0). This analysis identifies time points where there is a change in the linear slope of the trend. The optimum number of linear slopes and joinpoints is assessed using modified Bayesian Information Criteria.<sup>54</sup> The models incorporate estimated variation for each data point using the standard error of the rate. After identification of a change in trend, segmented regression can be fitted and annual percentage change in rate (with 95% confidence intervals) can be calculated.

Cox proportional hazards regression analyses were conducted comparing all-cause mortality rates in individuals with bipolar disorder, schizophrenia and the matched comparison group. The assumption of proportional hazards was tested by analysis of Schoenfeld residuals.<sup>55</sup> A number of multivariable models were tested. First, the association between diagnosis and all-cause mortality was assessed, adjusting for age, gender and calendar year and clustering within primary care practices, then additionally adjusting for area-level deprivation (defined as quintiles of Townsend score,<sup>56</sup> based on the patient's lower super output area – an average of 650 households), and ethnicity (categorised as White British, White other, Black, Asian, mixed and other). This fully adjusted model was stratified by gender, and age (16–50 years, over 50 years old). As with the rate, annual adjusted hazard ratios (HRs) were calculated for all-cause mortality and trends in HRs were assessed using joinpoint regression. In this instance, a change in HR per year (with 95% CIs) was calculated.

The associations between diagnosis and CVD death, CVD diagnosis, suicide and self-harm were assessed using the same multivariable approach, additionally adjusting for average number of visits to the physician per year of follow-up (to account for the likelihood of having a diagnostic code recorded in the EHR). For each outcome these models were stratified by gender, age (16–50 years, over 50 years old) and calendar period (start of 2000 until end of 2004, start of 2005 until end of 2009, start of 2010 until end of 2014) to examine potential effect modification.

A further model also including smoking status (worst ever of: never, ex-, current smoker), body mass index (BMI) (worst ever of: healthy weight, overweight, obese), and diagnoses of hypercholesterolemia (defined as total cholesterol  $\geq 5.2$  mmol/L),<sup>57</sup> hypertension (defined as code for hypertension or two sequential records of systolic blood pressure  $> 140$  mmHg)<sup>58</sup> and type 2 diabetes mellitus during follow-up was tested to see if these covariates explained elevated rates of CVD death and diagnoses. All analyses were completed using statistical software (Stata, version 14).

## Results

### Clinical and demographic features

A total of 17 314 people had a diagnosis of bipolar disorder and 22 497 had a diagnosis of schizophrenia with active records between the start of 2000 and the end of 2014. These were matched with 219 387 individuals who never received bipolar disorder or schizophrenia diagnoses. There were 1266 deaths in total in the group with bipolar disorder, 2061 in those with schizophrenia and 6279 in the comparison group (Table 1).

### All-cause mortality

The rate of all-cause mortality in individuals with bipolar disorder was 210.34 per 10 000 person-years at-risk (PYAR, 95% CI 199.07–222.25). Trends in bipolar disorder mortality rate suggested a reduction over follow-up time. Joinpoint regression fitted a linear model with a significant annual percentage change (APC) in rate of  $-4.1\%$  (95% CI  $-5.1$  to  $-3.1$ ) (Fig. 1). In individuals with schizophrenia the mortality rate was 248.57 per 10 000 PYAR (95% CI 238.06–259.53). Similarly, the rate of mortality in schizophrenia reduced between 2000 and 2014, with joinpoint regression fitting a model with no joinpoints, and an APC of  $-2.0\%$  (95% CI  $-3.0$  to  $-0.9$ ). In the comparison population the mortality rate was relatively stable between 2000 and 2003 (APC 4.2, 95% CI  $-7.6$  to 17.6) and then decreased until the end of the study period (APC  $-8.1$ , 95% CI  $-9.6$  to  $-6.5$ ).

Mortality was elevated in those with bipolar disorder (HR = 1.77, 95% CI 1.67–1.88) and schizophrenia (HR = 2.08, 95% CI 1.98–2.19) relative to the general population comparison group, after adjustment for age gender, calendar year, area-level deprivation and ethnicity (Table 2). Stratification by gender suggested that men and women with bipolar disorder had similarly elevated mortality rates ( $P = 0.297$ ), but in those with schizophrenia men's mortality rate (HR = 2.50, 95% CI 2.32–2.69) was more elevated than women's (HR = 1.78, 95% CI 1.66–1.90, test for interaction  $P < 0.0001$ ). Mortality rates in those aged 16–50 were more elevated, relative to the comparison group, than those over 50 (test for interaction in both groups  $P < 0.0001$ ). Individuals with bipolar disorder aged 16–50 had an adjusted HR of 3.22 (95% CI 2.77–3.75), individuals with schizophrenia had an adjusted HR of 4.69 (95% CI 4.16–5.29) in comparison with those aged 16–50 in the general population. There was evidence of a change in HRs over the study period for groups with both bipolar

	General population comparison (n = 219 387)	Bipolar disorder (n = 17 341)	Schizophrenia (n = 22 497)
Women, n (%)	102 037 (46.51)	10 202 (58.83)	8499 (37.78)
Age at start of follow-up, years: median (IQR)	41.35 (31.75–54.20)	42.76 (32.59–56.43)	42.51 (32.34–56.51)
Age at first mention diagnosis, years: median (IQR)	–	38.00 (28.14–50.47)	30.00 (23.12–41.00)
Follow-up years, median (IQR)	2.00 (0.77–4.32)	2.32 (0.93–5.12)	2.47 (0.94–5.53)
Died, n (%)	6279 (2.86)	1266 (7.30)	2061 (9.16)
Primary care contacts per year, median (IQR)	7.19 (2.39–18.89)	14.59 (7.86–27.13)	11.36 (5.98–20.84)
Ethnicity, n (%)			
White British	180 690 (82.36)	15 024 (86.64)	18 648 (82.89)
White Other	20 792 (9.48)	1465 (8.45)	1753 (7.79)
Black	5091 (2.32)	235 (1.36)	981 (4.36)
Asian	8464 (3.86)	330 (1.90)	635 (2.82)
Other or mixed	4350 (1.98)	287 (1.66)	480 (2.13)
Social deprivation at baseline, quintiles of UK Townsend score: n (%)			
1 (least deprived)	38 404 (17.51)	2696 (15.55)	2142 (9.52)
2	38 862 (17.71)	2932 (16.91)	2780 (12.36)
3	45 679 (20.82)	3742 (21.58)	4127 (18.34)
4	47 633 (21.71)	4128 (23.80)	5932 (26.37)
5 (most deprived)	41 971 (19.13)	3416 (19.70)	6695 (29.76)
Missing	6838 (3.12)	427 (2.46)	821 (3.65)
Recorded during follow-up, n (%)			
Smoking	55 531 (25.31)	6503 (37.50)	10 406 (46.26)
Obesity	45 447 (20.72)	5911 (34.09)	7801 (34.68)
Hypercholesterolemia	33 867 (15.44)	3800 (21.91)	4398 (19.55)
Hypertension	71 194 (32.45)	6494 (37.45)	8047 (35.77)
Diabetes mellitus	14 061 (6.41)	1851 (10.67)	2986 (13.27)

disorder and schizophrenia diagnoses (Fig. 1). Joinpoint analysis fitted a model with one joinpoint at 2006 for bipolar disorder. This model suggested that the HR decreased by 0.08 (95% CI –0.18–0.02) per year between 2000 and 2006, and significantly increased by 0.14 (95% CI 0.10–0.19) per year from 2006 to 2014 (Fig. 1). For schizophrenia, joinpoint regression fitted three linear models (two joinpoints); from 2000 to 2004 the HR reduced significantly by 0.29 (95% CI –0.48 to –0.10) per year, from 2004 to 2010 the HR increased by 0.11 (95% CI 0.04 to 0.17) per year, and from 2010 to 2014 increased by 0.34 (95% CI 0.18 to 0.49) (Fig. 1).

### CVD mortality and CVD diagnoses

There was an elevated HR for CVD deaths in schizophrenia (HR = 1.39, 95% CI 1.12–1.73) after accounting for age, gender, calendar year, area-level deprivation, ethnicity and average number of visits to the physician during follow-up (Table 3). Following additional adjustment for smoking, hypercholesterolemia, hypertension, BMI and diabetes CVD deaths were no longer elevated in people with schizophrenia relative to the general population (HR = 1.22, 95% CI 0.98–1.52). The HR for bipolar disorder was not elevated, relative to the comparison group and there was no evidence that this differed by gender or age (Table 3). However, stratification by 5-year periods suggested that CVD deaths were elevated in people with bipolar disorder, relative to the general population after 2010 (HR = 1.92, 95% CI 1.24–2.98), but not before this. Among those individuals with schizophrenia, gender was not an effect modifier ( $P = 0.068$ ). The HR for CVD mortality in people with schizophrenia aged 16–50 was 3.20 (95% CI 1.62–6.31), whereas in those over 50 it was 1.29 (95% CI 1.03–1.63, test for interaction  $P = 0.013$ ) (Table 3).

CVD diagnosis rates were elevated in both bipolar disorder and schizophrenia groups compared with the comparison group after adjustment for age, gender, calendar year, area-level deprivation, ethnicity and average number of visits to the

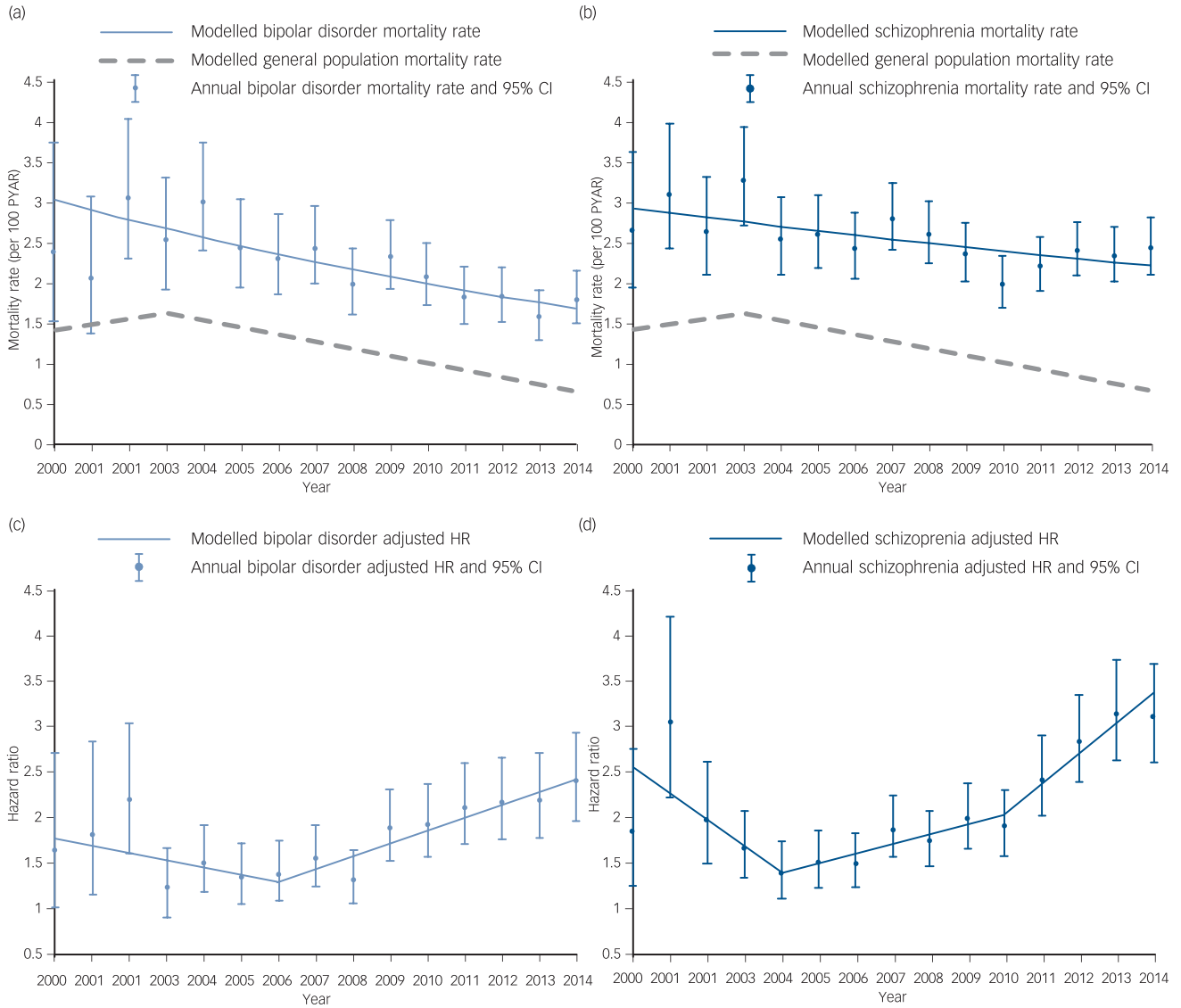
physician during follow-up (HR = 1.41, 95% CI 1.26–1.58, and HR = 1.36, 95% CI 1.24–1.50, respectively) (online Table DS1). Records of smoking, hypercholesterolemia, hypertension, BMI and diabetes mellitus in the patient notes did not fully explain the increased rates (HR = 1.26, 95% CI 1.12–1.41 in bipolar disorder, and HR = 1.22, 95% CI 1.11–1.35 in schizophrenia after adjustment for these confounders).

Men were significantly more likely to receive a CVD diagnosis than women in both bipolar disorder and schizophrenia groups (HR = 1.55, 95% CI 1.31–1.82 and HR = 1.37, 95% CI 1.20–1.57, respectively). Women with either SMI diagnosis did not have elevated rates relative to women in the general population (online Table DS1). Increased rates of CVD mortality in those aged 16–50 were not reflected in equally increased rates of CVD diagnosis (HR = 1.66, 95% CI 1.29–2.15).

### Suicide and self-harm

After accounting for age, gender, calendar year, area-level deprivation, ethnicity and average number of visits to the physician per year of follow-up, the suicide rate in those with bipolar disorder was 12.66 (95% CI 7.79–20.58) times that of the comparison group (Table 3). The adjusted HR in the group with schizophrenia was 7.21 (95% CI 4.26–12.19). Increased suicide rates were observed in both bipolar disorder and schizophrenia irrespective of gender, age or calendar period. However, because of the low event rate, there was no evidence of differences by gender, age group or time period (Table 3).

Self-harm rates were elevated in both bipolar disorder (HR = 25.24, 95% CI 23.63–29.96) and schizophrenia (HR = 22.14, 95% CI 19.58–25.03) after adjusting for sociodemographic characteristics and physician visits (online Table DS1). Self-harm rates did not differ by gender in either bipolar disorder ( $P = 0.096$ ) or schizophrenia ( $P = 0.735$ ). Self-harm was dramatically elevated in those aged 16–50 with a diagnosis of bipolar disorder (HR = 55.74, 95% CI 45.35–68.52) and schizophrenia (HR = 52.07,



**Fig. 1** All-cause mortality rate and adjusted hazard ratios compared with the general population, in bipolar disorder and schizophrenia (2000–2014).  
 Mortality rates, per 100 person-years at-risk (PYAR) in (a) bipolar disorder and (b) schizophrenia groups. Adjusted hazard ratios (HRs) in (c) bipolar disorder and (d) schizophrenia groups.

<b>Table 2</b> All-cause mortality rates			
All-cause mortality	General population comparison <sup>a</sup> (n = 219 387)	Bipolar disorder (n = 17 341)	Schizophrenia (n = 22 497)
Deaths, n	6279	1266	2061
PYAR, 10 000s	64.88	6.02	8.29
Rate, per 10 000 PYAR (95% CI)	96.79 (94.42–99.21)	210.34 (199.07–222.25)	248.57 (238.06–259.53)
Age, gender, calendar period adjusted HR (95% CI)	1 (reference)	1.79 (1.69–1.90)	2.14 (2.03–2.25)
Sociodemographics adjusted HR <sup>b</sup> (95% CI)	1 (reference)	1.77 (1.67–1.88)	2.08 (1.98–2.19)
<i>Stratified fully adjusted model<sup>c</sup></i>			
Gender, P <sup>c</sup>			
Men, HR (95% CI)	1 (reference)	0.297	<0.0001
Women, HR (95% CI)	1 (reference)	1.85 (1.68–2.04)	2.50 (2.32–2.69)
Age, P <sup>c</sup>			
16–50, HR (95% CI)	1 (reference)	1.73 (1.61–1.87)	1.78 (1.66–1.90)
> 50, HR (95% CI)	1 (reference)	<0.0001	<0.0001
		3.22 (2.77–3.75)	4.69 (4.16–5.29)
		1.60 (1.50–1.70)	1.80 (1.71–1.91)

PYAR, person-years at-risk; HR, hazard ratio.  
 a. General population comparison group of up to six individuals without bipolar disorder or schizophrenia matched for gender, age group and primary care practice.  
 b. Age, gender, calendar period, area-level deprivation, ethnicity.  
 c. Test for heterogeneity.



**Table 3** Cardiovascular disease mortality and suicide rates

	General population comparison <sup>a</sup> (n = 219 387)	Bipolar disorder (n = 17 341)	Schizophrenia (n = 22 497)
<i>Cardiovascular disease death</i>			
Deaths, n	437	59	106
PYAR, 10 000s	64.88	6.02	8.29
Rate, per 10 000 PYAR (95% CI)	6.74 (6.13–7.40)	9.80 (7.59–12.65)	12.78 (10.57–15.46)
Age, gender, calendar period adjusted, HR (95% CI)	1 (reference)	1.11 (0.85–1.46)	1.43 (1.15–1.76)
Sociodemographics adjusted HR <sup>b</sup> (95% CI)	1 (reference)	1.10 (0.84–1.46)	1.39 (1.12–1.73)
Stratified adjusted model <sup>b</sup> HR (95% CI)			
Gender, P <sup>c</sup>		0.394	0.068
Men	1 (reference)	1.28 (0.83–1.97)	1.74 (1.26–2.39)
Women	1 (reference)	1.00 (0.70–1.43)	1.16 (0.86–1.57)
Age, P <sup>c</sup>		0.960	0.013
16–50	1 (reference)	1.13 (0.34–3.71)	3.20 (1.62–6.31)
> 50	1 (reference)	1.10 (0.83–1.45)	1.29 (1.03–1.63)
Period, P <sup>c</sup>		0.009	0.323
2000–2004	1 (reference)	1.06 (0.64–1.77)	1.61 (1.12–2.30)
2005–2009	1 (reference)	0.69 (0.42–1.14)	1.13 (0.80–1.60)
2010–2014	1 (reference)	1.92 (1.24–2.98)	1.57 (1.01–2.43)
Health and health behaviour adjusted HR <sup>d</sup> (95% CI)	1 (reference)	1.05 (0.80–1.39)	1.22 (0.98–1.52)
<i>Suicide</i>			
Deaths, n	33	36	33
PYAR, 10 000s	64.88	6.02	8.29
Rate, per 10 000 PYAR (95% CI)	0.51 (0.36–0.72)	5.98 (4.31–8.29)	3.98 (2.83–5.60)
Age, gender, calendar period adjusted, HR (95% CI)	1 (reference)	12.94 (8.04–20.82)	7.90 (4.84–12.90)
Sociodemographics adjusted, <sup>b</sup> HR (95% CI)	1 (reference)	12.66 (7.79–20.58)	7.21 (4.26–12.19)
Stratified adjusted model <sup>b</sup> HR (95% CI)			
Gender, P <sup>c</sup>		0.524	0.810
Men		11.10 (5.85–21.06)	6.91 (3.71–12.87)
Women	1 (reference)	15.27 (7.11–32.78)	7.90 (3.15–19.79)
Age, P <sup>c</sup>		0.478	0.499
16–50	1 (reference)	13.20 (7.58–22.99)	8.17 (4.45–14.99)
> 50	1 (reference)	8.79 (3.30–23.41)	5.47 (2.00–14.90)
Period, P <sup>c</sup>		0.306	0.772
2000–2004	1 (reference)	6.60 (1.53–28.48)	10.18 (3.25–31.90)
2005–2009	1 (reference)	9.50 (4.74–19.07)	6.26 (3.05–12.88)
2010–2014	1 (reference)	18.88 (8.62–41.32)	7.50 (2.94–19.12)
PYAR, person-years at-risk.			
a. General population comparison group of up to six individuals without bipolar disorder or schizophrenia matched for gender, age group, primary care practice.			
b. Age, gender, calendar period, area-level deprivation, ethnicity, number of primary care contacts.			
c. Test for heterogeneity.			
d. Adjusted for age, gender, calendar period, area-level deprivation, ethnicity, smoking, high cholesterol, high blood pressure, body mass index, diabetes mellitus and primary care contacts.			

95% CI 42.43–63.92). Graphical inspection of the Schoenfeld residuals revealed no violations of the assumption of proportional hazards.

## Discussion

### Main findings

In this cohort of over 17 000 people with bipolar disorder and over 22 000 with schizophrenia, we found decreasing rates of all-cause mortality for both disorders since 2000. However, the HRs for mortality relative to a matched general population comparison group increased from the mid-2000s. This suggests that the improvement in health in the general population is increasing more rapidly than in those with SMI, and health inequalities are growing. This is despite a greater focus on this problem at a national and international level, in specialist, primary care and public health settings.

After accounting for sociodemographic characteristics, over the 15-year follow-up period, the rate of all-cause mortality in those with bipolar disorder was 1.77 times the general population (95% CI 1.67–1.88) and in individuals with schizophrenia was 2.08 times greater (1.98–2.19). These results are slightly lower than those from meta-analyses in the existing literature,<sup>7,33</sup> but are

consistent with population-based samples and hide the underlying trend in increasing mortality relative to the general population over this period. Deaths in those aged 16–50 were markedly elevated for both bipolar disorder and schizophrenia. In individuals with schizophrenia, the risk of dying before 50 of CVD is strikingly elevated, and CVD is infrequently diagnosed in advance of the terminal event, especially in women. Increased CVD death rates in those with schizophrenia were explained by conventional CVD risk factors (smoking, BMI, hypercholesterolemia, hypertension and type 2 diabetes mellitus), but increased CVD morbidity rates were not. Deaths identified as suicide were rare in the cohort and as such, we could not state which SMI has a more elevated risk. However, both diagnoses convey a dramatically increased risk, relative to the general population.

### Interpretation of our findings

During the study period, a number of factors could have differentially influenced mortality in people with bipolar disorder and schizophrenia compared with the general population. There is evidence that addressing negative health behaviours has been more effective in the general population, for example, population-level smoking cessation programmes have had less of an impact on people with SMI.<sup>59</sup> Although it has been suggested

that second-generation antipsychotics reduce mortality overall,<sup>6</sup> polypharmacy and higher drug dosages may increase it.<sup>60</sup> Polypharmacy is increasingly common in bipolar disorder<sup>61</sup> and may be contributing to the worsening CVD mortality compared with the general population in the 2010–2014 period. Wahlbeck and colleagues speculated that the reducing mortality gap seen in Nordic countries up until 2006 reflected the success of deinstitutionalisation.<sup>9</sup> Although deinstitutionalisation in the UK has been a success in terms of integrating people into wider society, it has been argued that there is now too little support for people living with bipolar disorder and schizophrenia in the community,<sup>62,63</sup> and this may be reflected in mortality rates. Research into the health effects of recession has suggested that consequences will be most severe for the poorest groups in society and will have the most impact where social safety-nets are lacking and public hardship grows rapidly.<sup>64,65</sup> Given this, we could hypothesise that policies made in the UK following the 2008 financial crash (i.e. austerity) have had the hardest impact on those with SMI. A comprehensive understanding of the mechanisms by which SMI shortens life remains elusive, but potentially constitutes a syndemic including psychiatric and physical comorbidity, substance misuse, clustering of adverse social factors and lifestyle behaviours.<sup>66</sup>

### Strengths and limitations

A major strength of this study, beyond its size and length of follow-up, is that the results are generalisable to individuals living with bipolar disorder and schizophrenia in the UK (whether or not they have been in-patients in psychiatric hospitals), because of the representativeness of the THIN database. The exposure groups (bipolar disorder and schizophrenia)<sup>44,45</sup> and the outcomes (mortality, CVD deaths, CVD, suicide and self-harm)<sup>46,47,50,51</sup> have been well validated. Despite this, there is potential under-recording of cause-specific deaths and morbidity. Cause of death from death certificates would have improved the study, but this information was not available. In particular, suicide rates were lower than would be expected from Office for National Statistics (ONS) data<sup>67</sup> but we would not expect these to be differential by diagnostic group and our HRs reflect recent standardised mortality ratio estimates from the UK.<sup>4,68</sup> The proportion of deaths from CVD in the general population comparison group (7%) is consistent with 2014 ONS data, where in a similar age range, CVD mortality represented 6% of all deaths.<sup>69</sup> There is no under-recording of all-cause mortality.<sup>39</sup> This study used a mixture of prevalent and incident cases of bipolar disorder and schizophrenia. It has been stated that this is the ideal situation as it allows exploration of the effects of different durations of exposure and enhances information on long exposure durations.<sup>70</sup> However, it means that there is the potential for both left truncation (that is, events occurring before we start to follow-up) and right censoring. Other cohort studies of this nature will invariably face the same problems.

Recording of smoking status, BMI, hypercholesterolemia, hypertension and type 2 diabetes mellitus may be incomplete and therefore there is potential for residual confounding. However, recording of a number of these CVD risk factors has been incentivised by the Quality and Outcomes Framework,<sup>11</sup> and we have attempted to minimise ‘missingness’ by defining these as ever recorded during follow-up. Although this incentivisation potentially improved CVD recording after 2004, there is no evidence that this was differential with regard to bipolar disorder, schizophrenia or the comparison group. The measure of social deprivation included in the multivariable model was related to the area in which the individual lived, rather than their individual

status. As such, this may not be sensitive enough to capture the impact of socioeconomic status on the association between SMI and mortality. However, our study goes further than others in this area, by adjusting for a number of recognised confounders, rather than simply using standardised mortality ratios that account for age and gender.

### Implications

This study suggests that although there have been important reductions in overall mortality since 2000, interventions to improve health outcomes for those with bipolar disorder or schizophrenia have not reduced the mortality gap. Mortality trends in individuals with SMI are important indicators of outcome and quality of psychiatric and medical care.<sup>8,71</sup> Our results underscore how continuous monitoring of mortality of people with bipolar disorder and schizophrenia, relative to the general population, might guide us in evaluating the impact of interventions to manage physical comorbidity, reduce disparities in medical care provision and prevent inequalities in background risk factors.

**Joseph F. Hayes**, MSc, MB, ChB, Division of Psychiatry, University College London, London; **Louise Marston**, PhD; **Kate Walters**, PhD, Department of Primary Care and Population Health, University College London, London; **Michael B. King**, PhD, **David P. J. Osborn**, PhD, Division of Psychiatry, University College London, London, UK

**Correspondence:** Joseph F. Hayes, Division of Psychiatry, UCL, 6th Floor Maple House, 149 Tottenham Court Road, London W1T 7NF, UK. Email: joseph.hayes@ucl.ac.uk

First received 3 Mar 2017, final revision 7 Apr 2017, accepted 14 Apr 2017

### References

- Laursen TM. Life expectancy among persons with schizophrenia or bipolar affective disorder. *Schizophr Res* 2011; **131**: 101–4.
- Laursen TM, Wahlbeck K, Hallgren J, Westman J, Osby U, Alinaghizadeh H, et al. Life expectancy and death by diseases of the circulatory system in patients with bipolar disorder or schizophrenia in the Nordic countries. *PLoS One* 2013; **8**: e67133.
- Chang C-K, Hayes RD, Perera G, Broadbent MT, Fernandes AC, Lee WE, et al. Life expectancy at birth for people with serious mental illness and other major disorders from a secondary mental health care case register in London. *PLoS One* 2011; **6**: e19590.
- Hoang U, Stewart R, Goldacre MJ. Mortality after hospital discharge for people with schizophrenia or bipolar disorder: retrospective study of linked English hospital episode statistics, 1999–2006. *BMJ* 2011; **343**: d5422.
- Hoang U, Goldacre MJ, Stewart R. Avoidable mortality in people with schizophrenia or bipolar disorder in England. *Acta Psychiatr Scand* 2013; **127**: 195–201.
- Tiihonen J, Lönnqvist J, Wahlbeck K, Klaukka T, Niskanen L, Tanskanen A, et al. 11-year follow-up of mortality in patients with schizophrenia: a population-based cohort study (FIN11 study). *Lancet* 2009; **374**: 620–7.
- Saha S, Chant D, McGrath J. A systematic review of mortality in schizophrenia: is the differential mortality gap worsening over time? *Arch Gen Psychiatry* 2007; **64**: 1123–31.
- Bushe CJ, Taylor M, Haukka J. Review: Mortality in schizophrenia: a measurable clinical endpoint. *J Psychopharmacol* 2010; **24** (4 suppl): 17–25.
- Wahlbeck K, Westman J, Nordentoft M, Gissler M, Laursen TM. Outcomes of Nordic mental health systems: life expectancy of patients with mental disorders. *Br J Psychiatry* 2011; **199**: 453–8.
- Martin Roland D. Linking physicians’ pay to the quality of care – a major experiment in the United Kingdom. *N Engl J Med* 2004; **351**: 1448–54.
- Doran T, Kontopantelis E, Valderas JM, Campbell S, Roland M, Salisbury C, et al. Effect of financial incentives on incentivised and non-incentivised clinical activities: longitudinal analysis of data from the UK Quality and Outcomes Framework. *BMJ* 2011; **342**: d3590.
- Edwards J, McGorry PD. *Implementing Early Intervention in Psychosis: A Guide to Establishing Psychosis Services*. Taylor & Francis, 2002.
- Schizophrenia Commission. *The Abandoned Illness: A Report from the Schizophrenia Commission*. Rethink Mental Illness, 2012.

- 14 Department of Health. *No Health Without Mental Health: A Cross-Government Mental Health Outcomes Strategy for People of all Ages*. Department of Health, 2011.
- 15 Department of Health. *Closing the Gap: Priorities for Essential Change in Mental Health*. Department of Health, 2014.
- 16 Colton CW, Manderscheid RW. Congruencies in increased mortality rates, years of potential life lost, and causes of death among public mental health clients in eight States. *Prev Chronic Dis* 2006; **3**: A42.
- 17 Swinson N, Ashim B, Windfuhr K, Kapur N, Appleby L, Shaw J. National confidential inquiry into suicide and homicide by people with mental illness: new directions. *Psychiatrist* 2007; **31**: 161–3.
- 18 Druss BG, Rohrbach RM, Levinson CM, Rosenheck RA. Integrated medical care for patients with serious psychiatric illness: a randomized trial. *Arch Gen Psychiatry* 2001; **58**: 861–8.
- 19 Koyanagi C, Carty L. *Get it Together: How to Integrate Physical and Mental Health Care for People with Serious Mental Disorders*. Bazelon Center for Mental Health Law, 2004.
- 20 Callaghan RC, Khizar A. The incidence of cardiovascular morbidity among patients with bipolar disorder: a population-based longitudinal study in Ontario, Canada. *J Affect Disord* 2010; **122**: 118–23.
- 21 Canadian Psychiatric Association. Clinical practice guidelines: treatment of schizophrenia. *Can J Psychiatry* 2005; **50**: 75.
- 22 Galletly CA, Foley DL, Waterreus A, Watts GF, Castle DJ, McGrath JJ, et al. Cardiometabolic risk factors in people with psychotic disorders: the second Australian national survey of psychosis. *Aust NZ J Psychiatry* 2012; **46**: 753–61.
- 23 The Royal Australian and New Zealand College of Psychiatrists. Royal Australian and New Zealand College of Psychiatrists clinical practice guidelines for the treatment of schizophrenia and related disorders. *Aust NZ J Psychiatry* 2016; **50**: 410–72.
- 24 Pirkis J, Harris M, Hall W, Ftanou M. *Evaluation of the Better Access to Psychiatrists, Psychologists and General Practitioners through the Medicare Benefits Schedule Initiative*. Centre for Health Policy, Programs and Economics, 2011.
- 25 Fleischhacker WW, Cetkovich-Bakmas M, De Hert M, Hennekens CH, Lambert M, Leucht S, et al. Comorbid somatic illnesses in patients with severe mental disorders: clinical, policy, and research challenges. *J Clin Psychiatry* 2008; **69**: 514.
- 26 De Hert M, Dekker J, Wood D, Kahl K, Holt R, Möller H-J. Cardiovascular disease and diabetes in people with severe mental illness position statement from the European Psychiatric Association (EPA), supported by the European Association for the Study of Diabetes (EASD) and the European Society of Cardiology (ESC). *Eur Psychiatry* 2009; **24**: 412–24.
- 27 Roshanaei-Moghaddam B, Katon W. Premature mortality from general medical illnesses among persons with bipolar disorder: a review. *Psychiatr Serv* 2009; **60**: 147–56.
- 28 Weiner M, Warren L, Fiedorowicz JG. Cardiovascular morbidity and mortality in bipolar disorder. *Ann Clin Psychiatry* 2011; **23**: 40–7.
- 29 Osborn DP, Levy G, Nazareth I, Petersen I, Islam A, King MB. Relative risk of cardiovascular and cancer mortality in people with severe mental illness from the United Kingdom's General Practice Research Database. *Arch Gen Psychiatry* 2007; **64**: 242–9.
- 30 McCreadie RG. Diet, smoking and cardiovascular risk in people with schizophrenia. *Br J Psychiatry* 2003; **183**: 534–9.
- 31 Cormac I. Promoting healthy lifestyles in psychiatric services. In *Physical Health in Mental Health. Final Report of a Scoping Group*. (Occasional Paper OP 67): 62–7. Royal College of Psychiatrists, 2009.
- 32 Miller LJ. Management of atypical antipsychotic drug-induced weight gain: focus on metformin. *Pharmacotherapy* 2009; **29**: 725–35.
- 33 Hayes J, Miles J, Walters K, King M, Osborn D. A systematic review and meta-analysis of premature mortality in bipolar affective disorder. *Acta Psychiatr Scand* 2015; **131**: 417–25.
- 34 Brown S. Excess mortality of schizophrenia. A meta-analysis. *Br J Psychiatry* 1997; **171**: 502–8.
- 35 Owens D, Horrocks J, House A. Fatal and non-fatal repetition of self-harm. *Br J Psychiatry* 2002; **181**: 193–9.
- 36 Singhal A, Ross J, Seminog O, Hawton K, Goldacre MJ. Risk of self-harm and suicide in people with specific psychiatric and physical disorders: comparisons between disorders using English national record linkage. *J R Soc Med* 2014; **107**: 194–204.
- 37 Lis Y, Mann RD. The VAMP Research multi-purpose database in the UK. *J Clin Epidemiol* 1995; **48**: 431–43.
- 38 Blak BT, Thompson M, Dattani H, Bourke A. Generalisability of The Health Improvement Network (THIN) database: demographics, chronic disease prevalence and mortality rates. *Inform Prim Care* 2011; **19**: 251–5.
- 39 Maguire A, Blak BT, Thompson M. The importance of defining periods of complete mortality reporting for research using automated data from primary care. *Pharmacoepidemiol Drug Saf* 2009; **18**: 76–83.
- 40 Horsfall L, Walters K, Petersen I. Identifying periods of acceptable computer usage in primary care research databases. *Pharmacoepidemiol Drug Saf* 2013; **22**: 64–9.
- 41 Langley TE, Szatkowski L, Gibson J, Huang Y, McNeill A, Coleman T, et al. Validation of The Health Improvement Network (THIN) primary care database for monitoring prescriptions for smoking cessation medications. *Pharmacoepidemiol Drug Saf* 2010; **19**: 586–90.
- 42 Lewis JD, Schinnar R, Bilker WB, Wang X, Strom BL. Validation studies of the health improvement network (THIN) database for pharmacoepidemiology research. *Pharmacoepidemiol Drug Saf* 2007; **16**: 393–401.
- 43 Chisholm J. The Read clinical classification. *BMJ* 1990; **300**: 1092.
- 44 Nazareth I, King M, Haines A, Rangel L, Myers S. Accuracy of diagnosis of psychosis on general practice computer system. *BMJ* 1993; **307**: 32–4.
- 45 Haroon S, Hayes JF, Blackburn R, Petersen I, Walters K, Nazareth I, et al. Recording of severe mental illness in United Kingdom primary care, 2000–2010. *PLoS One* 2013; **8**: e82365.
- 46 Ruigómez A, Martín-Merino E, Rodríguez LAG. Validation of ischemic cerebrovascular diagnoses in the health improvement network (THIN). *Pharmacoepidemiol Drug Saf* 2010; **19**: 579–85.
- 47 Hammad TA, McAdams MA, Feight A, Iyasu S, Dal Pan GJ. Determining the predictive value of Read/OXMIS codes to identify incident acute myocardial infarction in the General Practice Research Database. *Pharmacoepidemiol Drug Saf* 2008; **17**: 1197–201.
- 48 Ogdie A, Yu Y, Haynes K, Love TJ, Maliha S, Jiang Y, et al. Risk of major cardiovascular events in patients with psoriatic arthritis, psoriasis and rheumatoid arthritis: a population-based cohort study. *Ann Rheum Dis* 2015; **74**: 326–32.
- 49 Haw C, Casey D, Holmes J, Hawton K. Suicidal intent and method of self-harm: a large-scale study of self-harm patients presenting to a general hospital. *Suicide Life Threat Behav* 2015; **45**: 732–46.
- 50 Arana A, Wentworth CE, Ayuso-Mateos JL, Arellano FM. Suicide-related events in patients treated with antiepileptic drugs. *N Engl J Med* 2010; **363**: 542–51.
- 51 Hayes JF, Pitman A, Marston L, Walters K, Geddes JR, King M, et al. Self-harm, unintentional injury, and suicide in bipolar disorder during maintenance mood stabilizer treatment: a UK population-based electronic health records study. *JAMA Psychiatry* 2016; **73**: 630–7.
- 52 Wagner AK, Soumerai SB, Zhang F, Ross-Degnan D. Segmented regression analysis of interrupted time series studies in medication use research. *J Clin Pharm Ther* 2002; **27**: 299–309.
- 53 Kim H-J, Fay MP, Feuer EJ, Midthune DN. Permutation tests for joinpoint regression with applications to cancer rates. *Stat Med* 2000; **19**: 335–51.
- 54 Zhang NR, Siegmund DO. A modified Bayes information criterion with applications to the analysis of comparative genomic hybridization data. *Biometrics* 2007; **63**: 22–32.
- 55 Schoenfeld D. Partial residuals for the proportional hazards regression model. *Biometrika* 1982; **69**: 239–41.
- 56 Townsend P. Deprivation. *J Soc Policy* 1987; **16**: 125–46.
- 57 Ford ES, Mokdad AH, Giles WH, Mensah GA. Serum total cholesterol concentrations and awareness, treatment, and control of hypercholesterolemia among US adults: findings from the National Health and Nutrition Examination Survey, 1999 to 2000. *Circulation* 2003; **107**: 2185–9.
- 58 National High Blood Pressure Education Program. *The Seventh Report of the Joint National Committee on Prevention, Detection, Evaluation, and Treatment of High Blood Pressure*. National High Blood Pressure Education Program, 2004.
- 59 Lawrence D, Kisely S. Review: Inequalities in healthcare provision for people with severe mental illness. *J Psychopharmacol* 2010; **24** (4 suppl): 61–8.
- 60 Weinmann S, Read J, Aderhold V. Influence of antipsychotics on mortality in schizophrenia: systematic review. *Schizophr Res* 2009; **113**: 1–11.
- 61 Hayes J, Prah P, Nazareth I, King M, Walters K, Petersen I, et al. Prescribing trends in bipolar disorder: cohort study in the United Kingdom THIN primary care database 1995–2009. *PLoS One* 2011; **6**: e28725.
- 62 Fakhoury W, Priebe S. Deinstitutionalization and reinstitutionalization: major changes in the provision of mental healthcare. *Psychiatry* 2007; **6**: 313–6.
- 63 Green B, Griffiths E. Hospital admission and community treatment of mental disorders in England from 1998 to 2012. *Gen Hosp Psychiatry* 2014; **36**: 442–448.
- 64 Cooper B. Economic recession and mental health: an overview. *Neuropsychiatr* 2011; **25**: 113–7.

- 65 Riumallo-Herl C, Basu S, Stuckler D, Courtin E, Avendano M. Job loss, wealth and depression during the Great Recession in the USA and Europe *Int J Epidemiol* 2014; **43**: 1508–17.
- 66 Liu NH, Daumit GL, Dua T, Aquila R, Charlson F, Cuijpers P, et al. Excess mortality in persons with severe mental disorders: a multilevel intervention framework and priorities for clinical practice, policy and research agendas. *World Psychiatry* 2017; **16**: 30–40.
- 67 Office for National Statistics. *Mortality Statistics: Deaths Registered in England and Wales (Series DR)*. ONS, 2016 (<http://webarchive.nationalarchives.gov.uk/20160105160709/http://www.ons.gov.uk/ons/rel/vsob1/mortality-statistics-deaths-registered-in-england-and-wales-series-dr-/index.html>).
- 68 Brown S, Kim M, Mitchell C, Inskip H. Twenty-five year mortality of a community cohort with schizophrenia. *Br J Psychiatry* 2010; **196**: 116–21.
- 69 Townsend N, Bhatnagar P, Wilkins E, Wickramasinghe K, Rayner M. *Cardiovascular Disease Statistics 2015*. British Heart Foundation, 2014.
- 70 Vandembroucke J, Pearce N. Point: incident exposures, prevalent exposures, and causal inference: does limiting studies to persons who are followed from first exposure onward damage epidemiology? *Am J Epidemiol* 2015; **182**: 826–33.
- 71 Ösby U, Correia N, Brandt L, Ekblom A, Sparén P. Time trends in schizophrenia mortality in Stockholm county, Sweden: cohort study. *BMJ* 2000; **321**: 483–4.





Data supplement to Hayes et al Mortality gap for people with bipolar disorder and schizophrenia: UK-based cohort study 2000–2014.  
Br J Psychiatry doi: 10.1192/bjp.bp.117.202606

**Table DS1 Cardiovascular disease diagnosis and self-harm rates**

	<b>General population comparison<sup>a</sup> N= 219,387</b>	<b>Bipolar disorder N= 17,341</b>		<b>Schizophrenia N= 22,497</b>	
<b>Cardiovascular disease</b>					
Events, n	2445	382		551	
PYAR (10,000s)	61.59	5.60		7.76	
Rate, per 10,000 PYAR (95%CI)	39.70 (38.15-41.30)	68.19 (61.69-75.39)		70.97 (65.28-77.15)	
Age, sex, calendar period adjusted HR (95%CI)	1 (reference)	1.46 (1.31-1.63)		1.47 (1.34-1.61)	
<sup>b</sup> Sociodemographics adjusted HR (95% CI)	1 (reference)	1.41 (1.26-1.58)		1.36 (1.24-1.50)	
Stratified <sup>b</sup> adjusted model HR (95%CI)			P-value <sup>d</sup>		P-value <sup>d</sup>
Men	1 (reference)	1.55 (1.31-1.82)	<0.0001	1.37 (1.20-1.57)	0.018
Women	1 (reference)	1.00 (0.86-1.17)		1.04 (0.90-1.20)	
16-50	1 (reference)	2.30 (1.78-2.99)	0.670	1.66 (1.29-2.15)	0.002
>50	1 (reference)	2.45 (2.01-2.99)		2.60 (2.14-3.14)	
2000-2004	1 (reference)	1.22 (0.96-1.56)	0.118	1.45 (1.124-1.69)	0.762
2005-2009	1 (reference)	1.26 (1.03-1.54)		1.46 (1.24-1.71)	
2010-2014	1 (reference)	1.57 (1.34-1.83)		1.35 (1.16-1.57)	
<sup>c</sup> Health and health behaviour adjusted HR (95% CI)	1 (reference)	1.26 (1.12-1.41)		1.22 (1.11-1.35)	
<b>Self-harm</b>					
Events, n	390	950		1101	
PYAR (10,000s)	64.87	5.99		8.26	
Rate, per 10,000 PYAR (95%CI)	6.01 (5.44-6.64)	158.66 (148.88-169.07)		133.33 (125.68-141.44)	
Age, sex, calendar period adjusted HR (95%CI)	1 (reference)	26.61 (23.63-29.96)		24.04 (21.37-27.07)	
<sup>b</sup> Sociodemographics adjusted HR (95% CI)	1 (reference)	25.24 (22.37-28.49)		22.14 (19.58-25.03)	

Stratified fully <sup>b</sup> adjusted model HR (95%CI)			P-value <sup>d</sup>		P-value <sup>d</sup>
Men	1 (reference)	22.21 (18.48- 26.68)	0.096	22.32 (18.91- 26.34)	0.735
Women	1 (reference)	27.31 (23.21- 32.13)		21.43 (17.97- 25.54)	
16-50	1 (reference)	55.74 (45.35- 68.52)	0.0001	52.07 (42.43- 63.92)	0.0001
>50	1 (reference)	13.99 (11.98- 16.34)		9.99 (8.53- 11.72)	
2000-2004	1 (reference)	20.56 (14.25- 29.67)	0.424	23.69 (16.91- 33.19)	0.030
2005-2009	1 (reference)	26.56 (21.96- 32.13)		17.69 (14.60- 21.43)	
2010-2014	1 (reference)	26.69 (22.48- 31.69)		24.68 (20.79- 29.31)	

<sup>a</sup>General population comparison group of up to 6 individuals without BPD or schizophrenia matched for sex, age group, primary care practice

<sup>b</sup>age, sex, calendar period, area level deprivation, ethnicity, number of primary care contacts

<sup>c</sup>Adjusted for age, sex, calendar period, area level deprivation, ethnicity, smoking, high cholesterol, high blood pressure, BMI, diabetes mellitus and primary care contacts

<sup>d</sup>Test for heterogeneity

# BJPpsych

The British Journal of Psychiatry

## Mortality gap for people with bipolar disorder and schizophrenia: UK-based cohort study 2000–2014

Joseph F. Hayes, Louise Marston, Kate Walters, Michael B. King and David P. J. Osborn

BJP published online July 6, 2017 Access the most recent version at DOI: [10.1192/bjp.bp.117.202606](https://doi.org/10.1192/bjp.bp.117.202606)

### Supplementary Material

Supplementary material can be found at:  
<http://bjp.rcpsych.org/content/suppl/2017/06/29/bjp.bp.117.202606.DC1>

### References

This article cites 0 articles, 0 of which you can access for free at:  
<http://bjp.rcpsych.org/content/early/2017/06/28/bjp.bp.117.202606#BIBL>

### Reprints/ permissions

To obtain reprints or permission to reproduce material from this paper, please write to [permissions@rcpsych.ac.uk](mailto:permissions@rcpsych.ac.uk)

### P<P

Published online 2017-07-06T00:08:02-07:00 in advance of the print journal.

### You can respond to this article at

[/letters/submit/bjprcpsych;bjp.bp.117.202606v1](http://letters/submit/bjprcpsych;bjp.bp.117.202606v1)

### Downloaded from

<http://bjp.rcpsych.org/> on October 17, 2017  
Published by The Royal College of Psychiatrists

Advance online articles have been peer reviewed and accepted for publication but have not yet appeared in the paper journal (edited, typeset versions may be posted when available prior to final publication). Advance online articles are citable and establish publication priority; they are indexed by PubMed from initial publication. Citations to Advance online articles must include the digital object identifier (DOIs) and date of initial publication.

To subscribe to *The British Journal of Psychiatry* go to:  
<http://bjp.rcpsych.org/site/subscriptions/>